

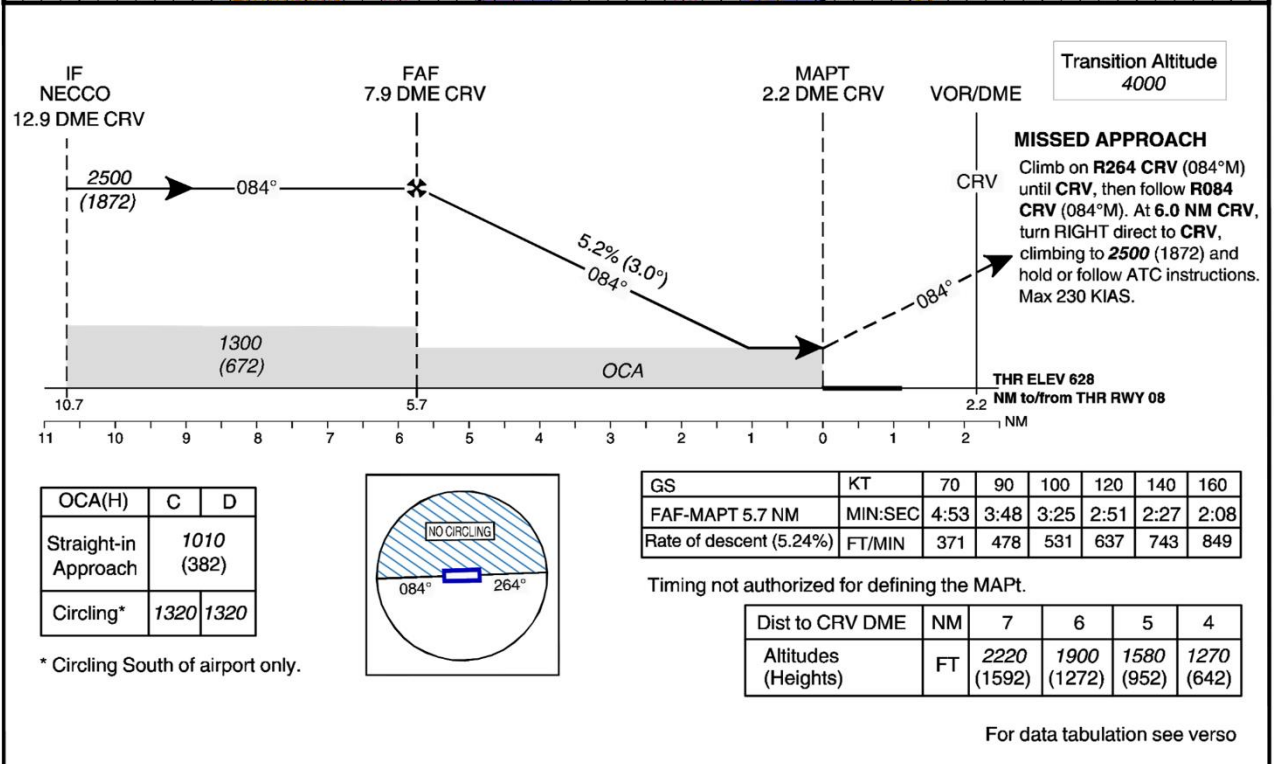
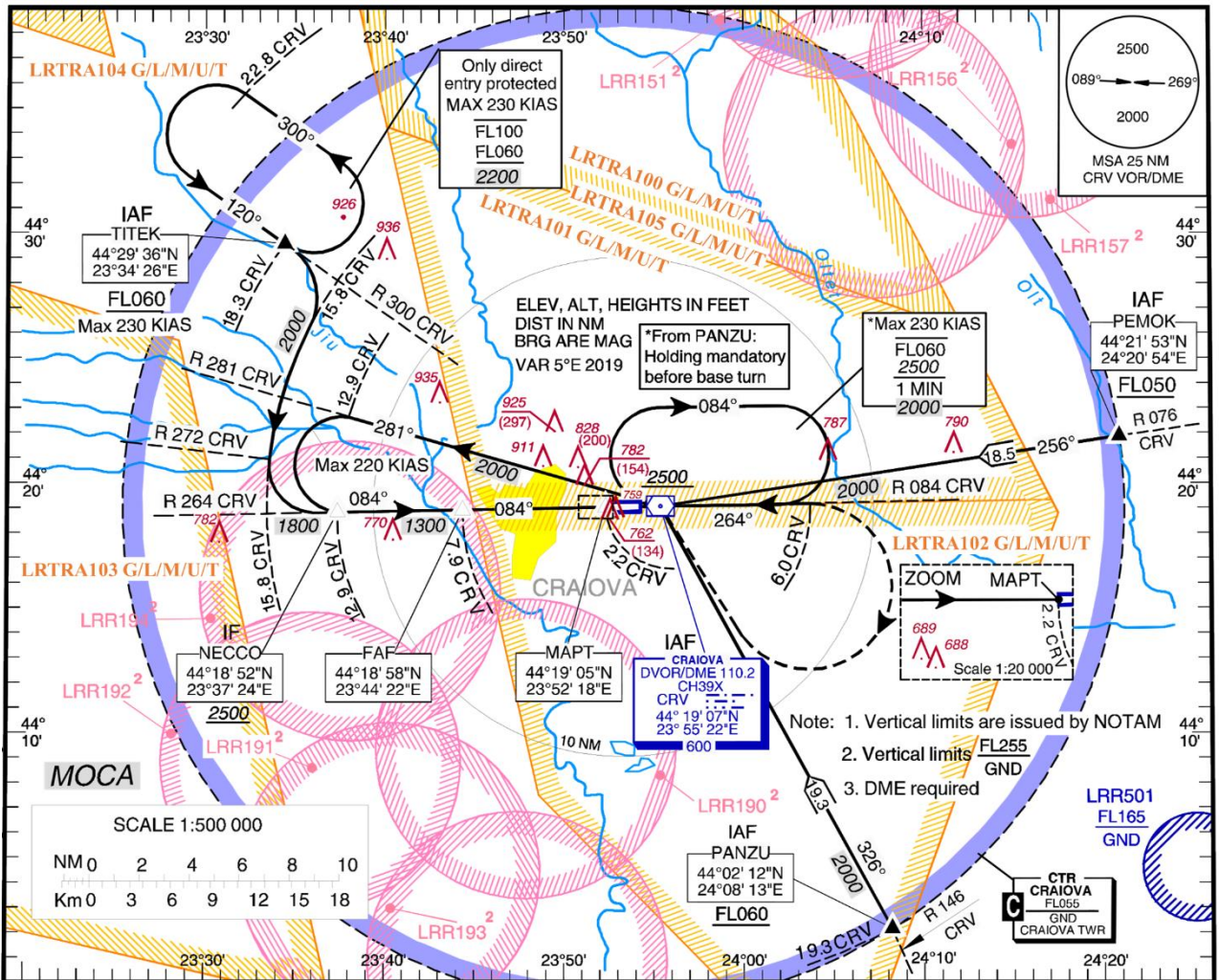
**LRCV/ CRA**  
**INSTRUMENT APPROACH CHART - ICAO**

**CRAIOVA, ROMANIA**  
**VOR RWY 08 CAT C,D**

AERODROME ELEV. **628 ft**  
HEIGHTS RELATED TO AD ELEV

VOR CRV **110.2**

GRANAT Tower **124.575**  
GRANAT Tower ALTN **122.100**



**LRCV/ CRA**

**CRAIOVA, ROMANIA  
VOR RWY 08 CAT C,D**

**AERONAUTICAL DATA TABULATION**

<b>VOR Approach to RWY 08 from TITEK, PEMOK, PANZU, CRV.</b>	
<b>Fix/Point</b>	<b>Coordinates</b>
<b>TITEK (IAF) – BRG 300.05° / 18.30NM CRV</b>	44°29'35.8"N 023°34'25.9"E
<b>PEMOK (IAF) – BRG 076.27° / 18.54NM CRV</b>	44°21'52.9"N 024°20'54.5"E
<b>PANZU (IAF) – BRG 146.26° / 19.28NM CRV</b>	44°02'12.0"N 024°08'13.0"E
<b>CRV DVOR/DME (IAF)</b>	44°19'07.0"N 023°55'21.9"E
<b>BRG 300.05° / 15.80NM CRV</b>	44°28'10.0"N 023°37'18.1"E
<b>BRG 264.00° / 15.80NM CRV</b>	44°18'48.3"N 023°33'21.7"E
<b>BRG 084.00° / 6.00NM CRV</b>	44°19'12.9"N 024°03'43.3"E
<b>NECCO (IF) – BRG 264.00° / 12.90NM CRV</b>	44°18'51.5"N 023°37'26.2"E
<b>FAF – BRG 264.00° / 7.90NM CRV</b>	44°18'58.2"N 023°44'21.8"E
<b>MAPT – BRG 264.00° / 2.20NM CRV</b>	44°19'04.6"N 023°52'18.1"E
<b>CRV DVOR/DME</b>	44°19'07.0"N 023°55'21.9"E
<b>THR 08</b>	44°19'04.57"N 023°52'22.32"E

Final approach descent gradient (angle): 5.2% (3.00°)
---

**RADIO COMMUNICATION FAILURE**

a) If VOR RWY 08 instrument flight procedure was assigned or received by ATC, set transponder 7600, proceed according assigned or designated VOR RWY 08 instrument flight procedure. Descending shall be executed in accordance with vertical restrictions specified on chart.

b) If VOR RWY 08 instrument flight procedure was not assigned or received by ATC, set transponder 7600, then:

b1) If arriving via TITEK, hold at TITEK for 4 minutes, then continue the VOR RWY 08 approach. Descending shall be executed in accordance with vertical restrictions specified on chart.

b2) If arriving via PEMOK or PANZU, proceed according to FPL to CRV and hold 4 minutes, then continue the VOR RWY 08 approach.